





ALTERNATIVA A - OPEN PLAN


998 sqm
 Net Area



113
 Seats

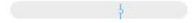
112
 Open Space


0
 Offices

7
 Conf Room

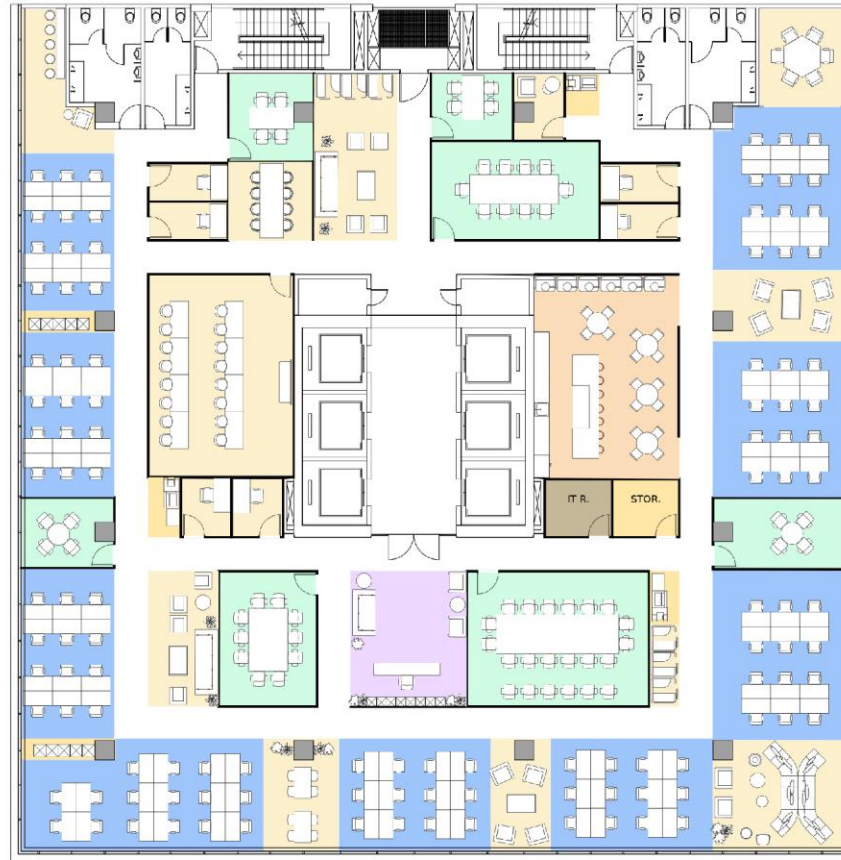
8.83
 Density sqm/person

Daylight  100%

Privacy  0%


Efficiency  80%


† Average



-  Office
-  Reception
-  Pantry
-  Executive Office
-  Conf Room
-  IT Room
-  Open Space
-  Amenities
-  Comfort Zone

ALTERNATIVA B - MIX


998 sqm
 Net Area



89
 Seats

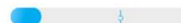
72
 Open Space


14
 Offices

7
 Conf Room

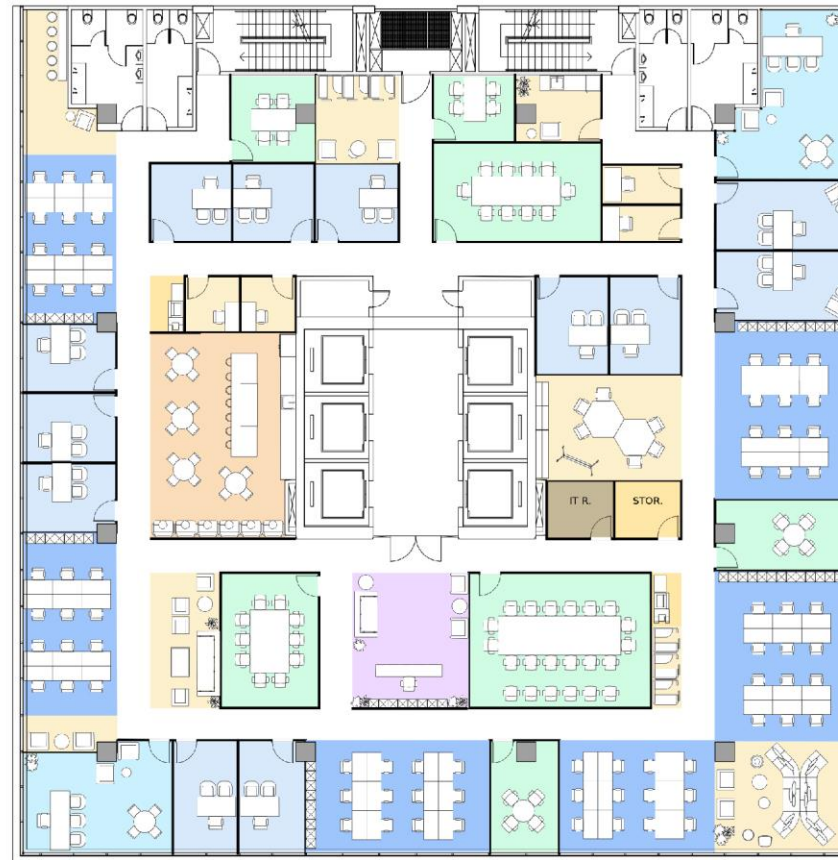
11.21
 Density sqm/person

Daylight  94%

Privacy  18%


Efficiency  80%


† Average



-  Office
-  Reception
-  Pantry
-  Executive Office
-  Conf Room
-  IT Room
-  Open Space
-  Amenities
-  Comfort Zone

ALTERNATIVA C - OFFICES


998 sqm
 Net Area



46
 Seats


0
 Open Space


38
 Offices

7
 Conf Room

21.70
 Density sqm/person

Daylight  76%

Privacy  85%

Efficiency  81%

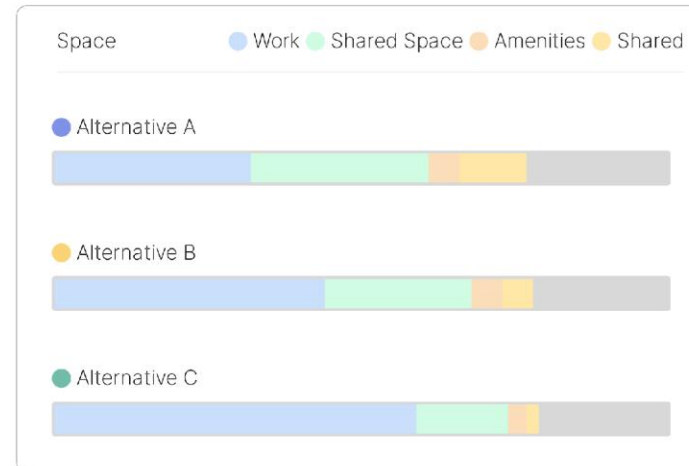
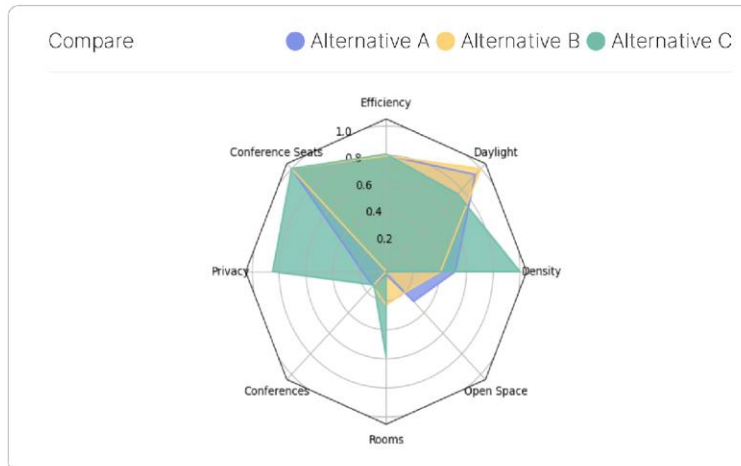
† Average



- Office
- Executive Office
- Open Space
- Reception
- Conf Room
- Amenities
- Pantry
- IT Room
- Comfort Zone

ANÁLISIS COMPARATIVO

	● Alternative A	● Alternative B	● Alternative C
Seats	89	113	46
Open Space	72	112	0
Offices	14	0	38
Conf Room	7	7	7
Density sqm/person	11.21	8.83	21.70
Daylight	94%	100%	76%
Privacy	18%	0%	85%



VIDEO 3D



[Edificio Alto Caral on Vimeo](#)